

STRATEGICALLY LOCATED

Industrial Land for Sale

2.5 to 100+ Acres Lots

Rocky View County, Alberta

fulton  industrial

Phases 1 & 2
SOLD OUT
Phase 3
NOW
PRE-SELLING

AGENTS FEES PROTECTED

8 minutes east of Calgary City Limit
Fronting Hwy 22x & CP Rail Main Line

More land for your dollar along a strategic industrial growth corridor.

Fulton Industrial Park offers the best value for industrial land within 15 minutes of Calgary. Located directly on a strategic shipping corridor, minutes away from Calgary's southeast industrial areas, CPKC Rail's intermodal facilities and Calgary's fastest growing residential communities.

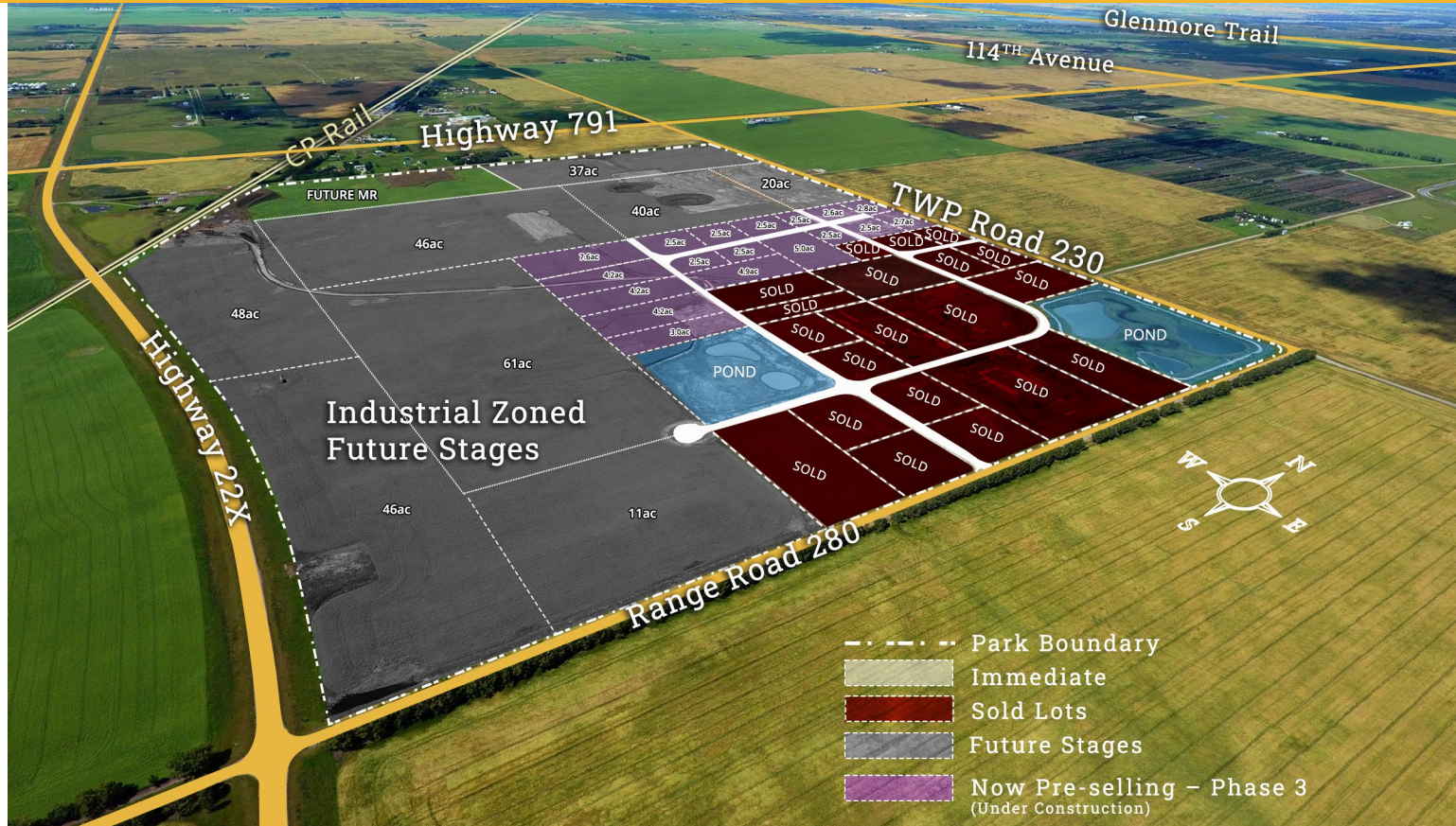
DEVELOPMENT FEATURES:

- » Best industrial land value within 15 minutes of Calgary
- » Along a strategic growth corridor 8 minutes from ring road and City residential
- » Flexible industrial zoning
- » No Business taxes
- » Property Tax rate 42% lower than Calgary (2022)
- » Large lot and custom subdivision possibilities
- » Fibre optic communications, wide paved roads, piped water supply underground stormwater collection, heavy power and gas

CALL YOUR BROKER
OR CONNECT WITH US TODAY

Brad Chorley | 403.242.6002
info@resland.com | **FultonIndustrial.ca**

RESLAND
DEVELOPMENT GROUP



Fulton Industrial Development Highlights

Fulton offers highly flexible and cost-effective industrial land along a major commercial transportation route identified by the Municipality as a strategic growth corridor.



Significantly Lower Taxes

No business tax and 50% lower property tax rate than Calgary



Key Transportation Route

Located 8 minutes from the Stoney Trail Ring Road along the Hwy 22x corridor at the CP Rail main line crossing. Hwy 22x is the southern bypass route to Hwy 1



Urban Development Standards

Wide curbed roads, fibre optic communications, piped water supply, underground storm water collection and more.



Flexible Industrial Zoning

I-HVY zoning allows for the broadest range of industrial land uses and no building commitment



Cheaper Utilities

No municipal taxes on electricity or gas bills lowers utility costs by at least 11%



Flexible Lot Sizing

Customizable lot sizes can accommodate large format projects



Proximity to Work Force

10-minutes from the rapidly growing residential communities of SE Calgary (Mahogany, Hotchkiss, Rangeview, Copperfield, Auburn Bay, Seton, etc.)



Save up to 50% in upfront & Operating Costs

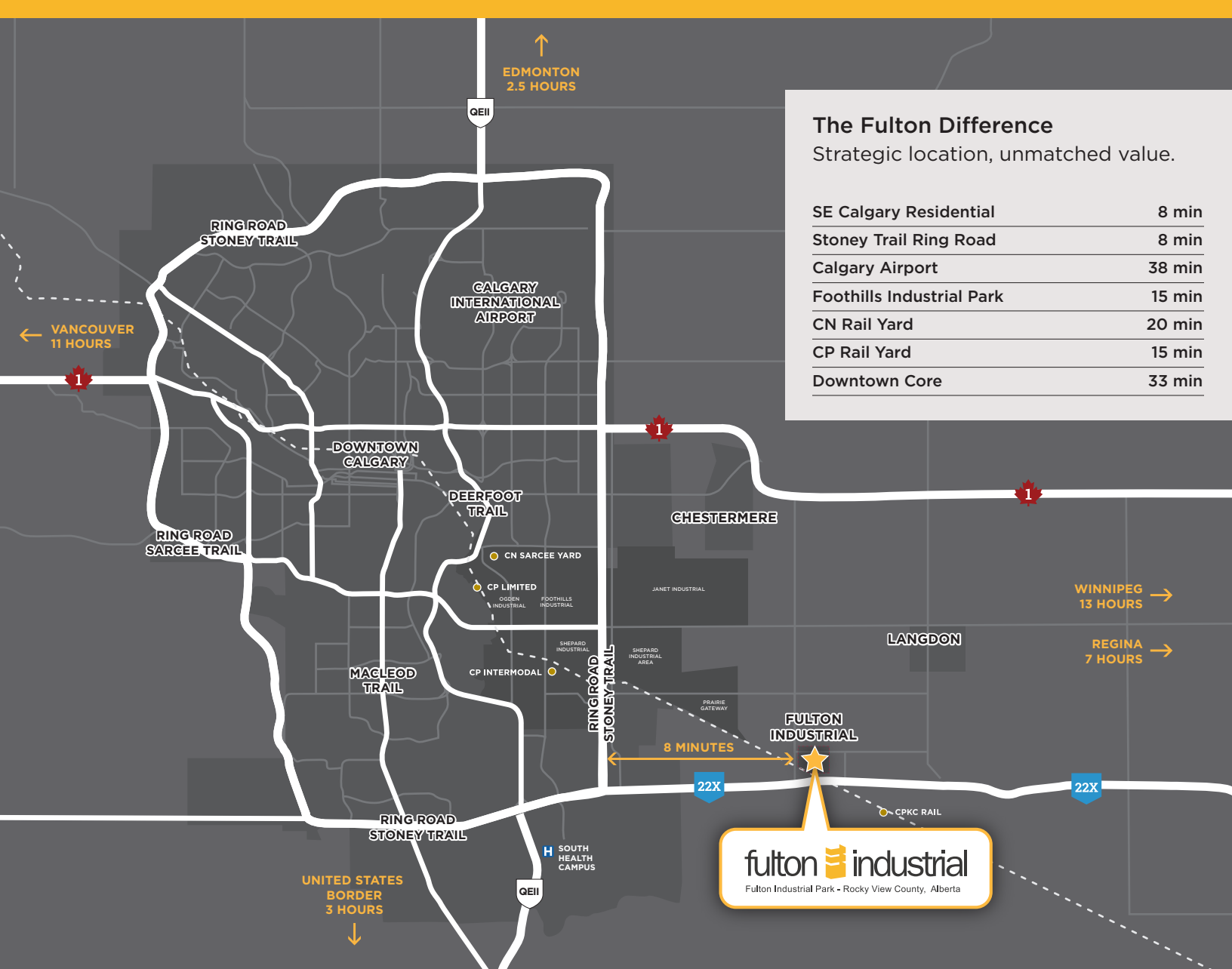
Along with Lower land prices, property tax rates and utility costs can save up to 50% in annual operating costs compared to an identical facility in the City

Fulton Industrial Site Plan



The information contained herein has been gathered from sources deemed reliable, but is not warranted as such and does not form any part of any future contract. The developer reserves the right to change specifications, sizes, prices and features. This offering may be altered or withdrawn at any time without notice. E.&O.E.

| PHASE | LEGAL DESCRIPTION | LOT SIZE (ACRES) |
|----------------------|---|---|
| Phase One & Two Lots | SOLD OUT | SOLD OUT |
| Phase Three Lots | NOW PRE-SELLING UNDER CONSTRUCTION CALL FOR PRICING | NOW PRE-SELLING UNDER CONSTRUCTION CALL FOR PRICING |



**Close to Calgary's
fastest growing residential
communities:**

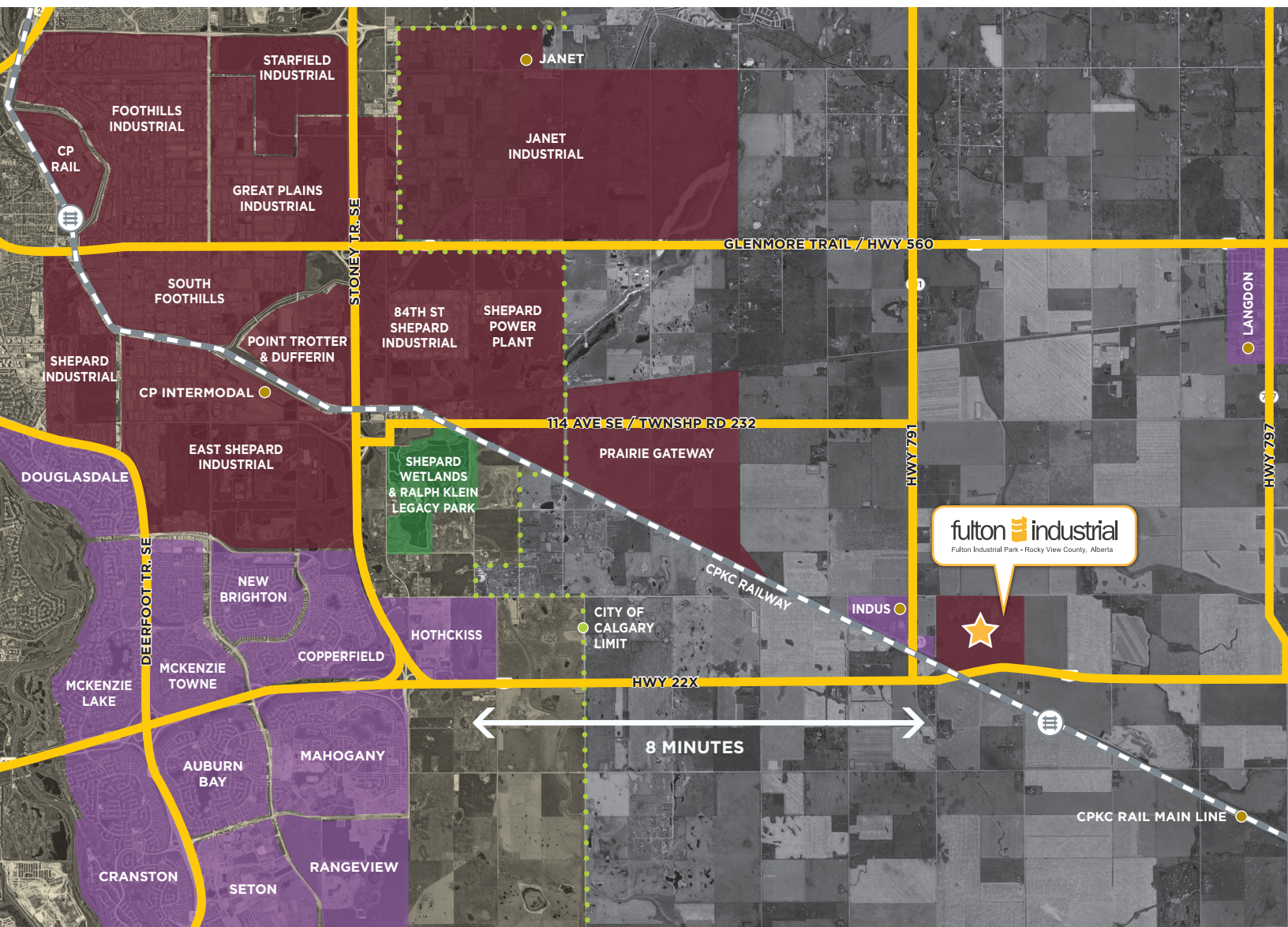
| | |
|-------------------|--------|
| Hotchkiss SE | 8 min |
| Langdon, AB | 10 min |
| Mahogany SE | 11 min |
| Auburn Bay SE | 11 min |
| New Brighton SE | 11 min |
| McKenzie Towne SE | 11 min |

Strategic Highway 22X Corridor Location

Positioned on a primary east/west commercial shipping corridor through Calgary, Fulton's location offers a number of strategic and operational benefits:

- ▶ 8 minutes from Stoney Trail Ring Road
- ▶ Easy access to Alberta High Load Corridor
- ▶ 15 minutes from CP Rail Intermodal facilities
- ▶ Multiple paved connections to Calgary with no seasonal road bans


The TransCanada Highway 1 route east of Calgary aligns with Hwy 22x. Upon completion of the final portion of the Stoney Trail Ring Road, the Hwy 22x corridor will become the shortest and fastest east/west connecting route for Hwy 1 shipping through Calgary.



South East Calgary Infrastructure & Growth Corridors

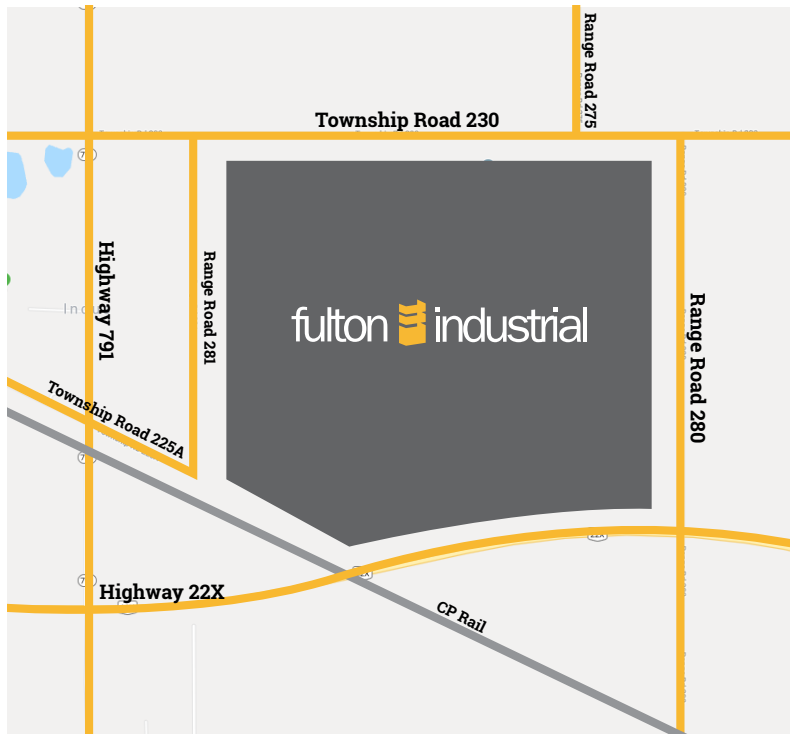
LEGEND:

- Industrial Areas
- South Communities & Towns
- City of Calgary Boundary
- Railway Line
- Roads
- City of Calgary
- Other Points of Interest



**Buy, build or lease the right
property, in the right location,
at the right price.**

At Fulton Industrial



**Position your
business for success.**

CALL YOUR BROKER

or connect with us today



Fulton Industrial Park is developed
by RESLAND Development Group.
For more information, contact:

Brad Chorley
PARTNER

c: 403.242.6002

e: info@resland.com

The information contained herein has been gathered from sources deemed reliable, but is not warranted as such and does not form any part of any future contract.
The developer reserves the right to change specifications, sizes, prices and features. This offering may be altered or withdrawn at any time without notice. E.&O.E.
(RDG-0046 - February 2026)

FultonIndustrial.ca
403.242.6002

LOCATION. FLEXIBILITY. VALUE.

fulton industrial