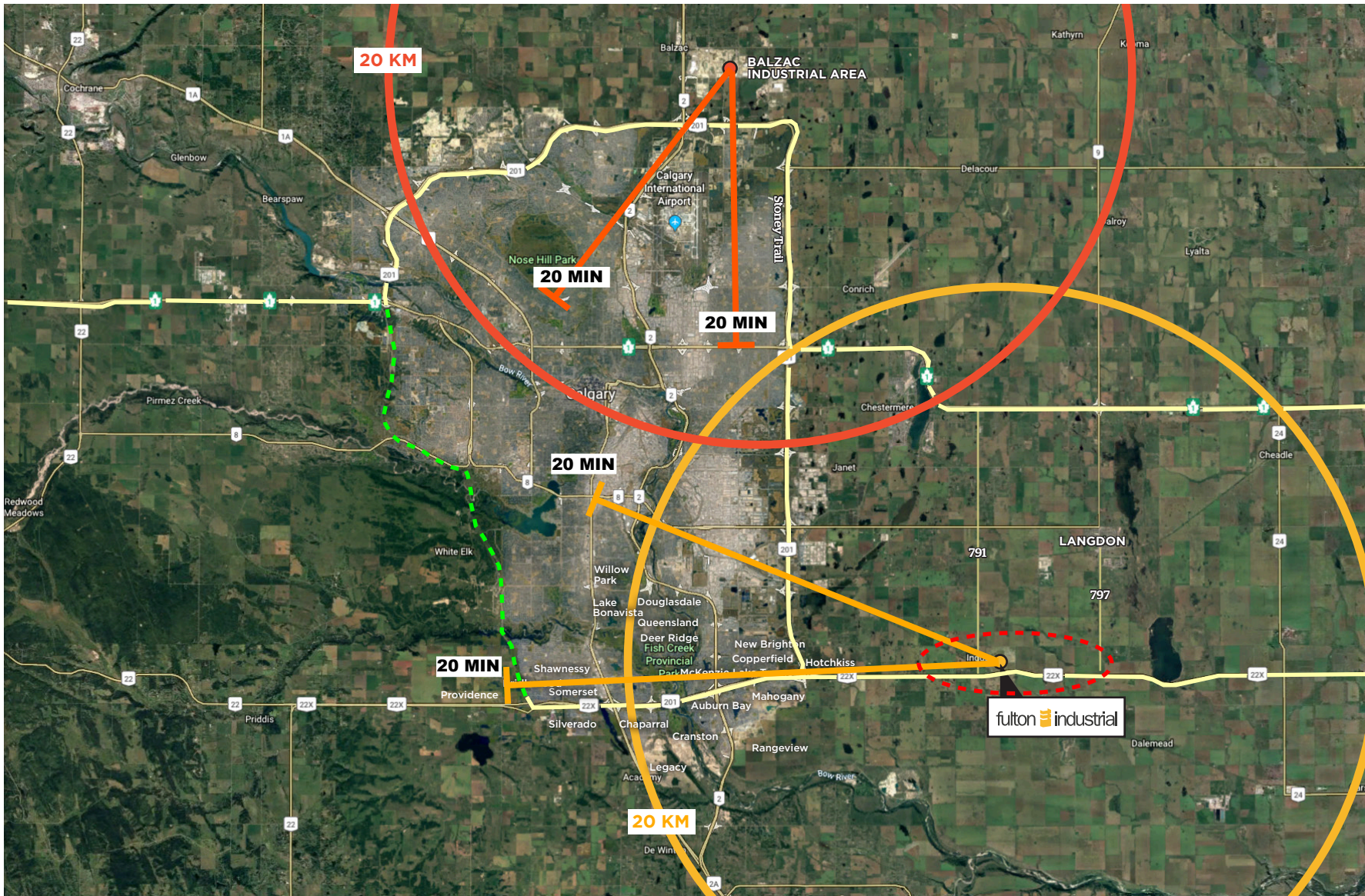


Proximity to the City of Calgary



LOCAL DEVELOPMENT CHARACTERISTICS:

- 10 minutes from SE Calgary
- 8 minutes from Ring Road
- 10 minutes from Calgary's primary industrial
- 10 minutes from fastest growing residential areas in Calgary
- 10 minutes from Langdon
- Confluence of major transportation routes and Railway
- 20 minutes drive time in the South East offers increased range that covers most of South Calgary

The information contained herein has been gathered from sources deemed reliable, but is not warranted as such and does not form any part of any future contract. The developer reserves the right to change specifications, sizes, prices and features. This offering may be altered or withdrawn at any time without notice. E.&O.E.